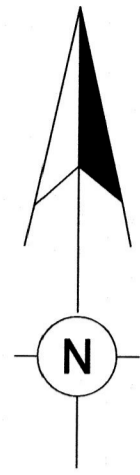
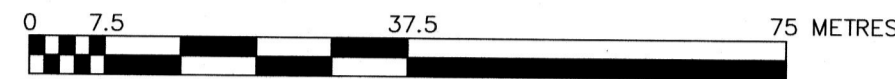


PLAN OF SURVEY
OF ALL OF
BLOCK 65
REGISTERED PLAN 16M-79
GEOGRAPHIC TOWNSHIP OF SARAWAK
TOWNSHIP OF GEORGIAN BLUFFS
COUNTY OF GREY

HEWETT & MILNE LIMITED
SCALE - 1 : 750



I REQUIRE THIS PLAN TO BE DEPOSITED
UNDER THE LAND TITLES ACT.

PLAN 16R-11520
RECEIVED AND DEPOSITED

DATE...MARCH 8, 2021.....

DATE...Mar 9, 2021.....

Neil C. Milne
NEIL C. MILNE, O.L.S.

Chris Novak
REPRESENTATIVE FOR LAND REGISTRAR
FOR THE LAND TITLES DIVISION
OF GREY (No. 16)

SCHEDULE OF PARTS			
PART	BLOCK	PLAN	PIN
1	PART OF 65	16M-79	PART OF 37037-0579(LT)
2	PART OF 65	16M-79	PART OF 37037-0579(LT)
3	PART OF 65	16M-79	PART OF 37037-0579(LT)

PARTS 1, 2 AND 3 COMPRISE ALL OF PIN 37037-0579(LT)
PARTS 1, 2 AND 3 SUBJECT TO EASEMENT AS IN GY5186

METRIC NOTE

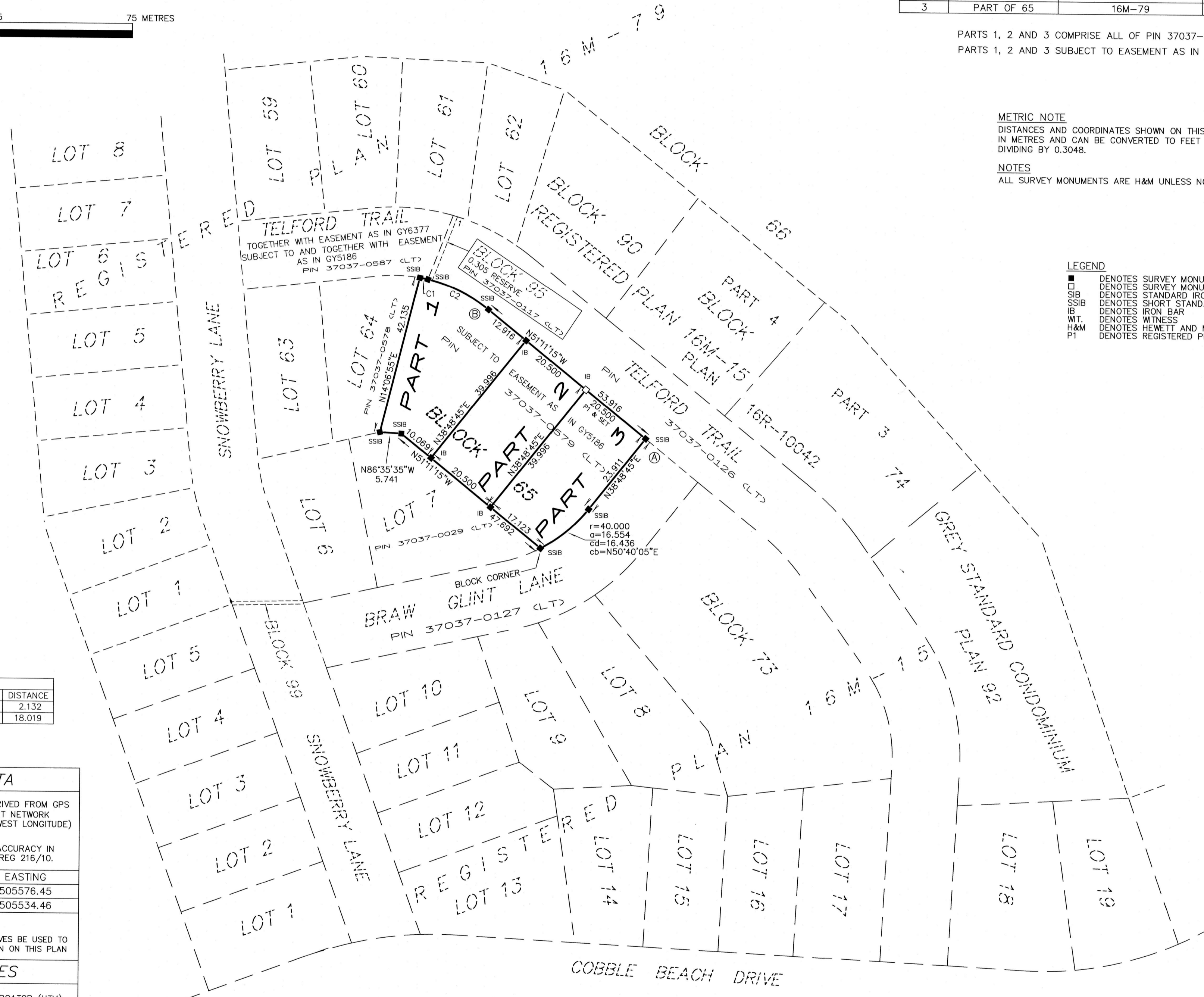
DISTANCES AND COORDINATES SHOWN ON THIS PLAN ARE
IN METRES AND CAN BE CONVERTED TO FEET BY
DIVIDING BY 0.3048.

NOTES

ALL SURVEY MONUMENTS ARE H&M UNLESS NOTED OTHERWISE

LEGEND

- DENOTES SURVEY MONUMENT FOUND
- DENOTES SURVEY MONUMENT SET
- SSIB DENOTES STANDARD IRON BAR
- SSIB DENOTES SHORT STANDARD IRON BAR
- IB DENOTES IRON BAR
- WT. DENOTES WITNESS
- H&M DENOTES HEWETT AND MILNE LTD., O.L.S.
- P1 DENOTES REGISTERED PLAN 16M-79



CURVE TABLE				
NUM	ARC	RADIUS	BEARING	DISTANCE
C1	2.132	40.000	N78°46'05"W	2.132
C2	18.175	40.000	N64°12'20"W	18.019

INTEGRATION DATA

ALL COORDINATES ARE IN METRES, ARE DERIVED FROM GPS
RTK OBSERVATIONS USING THE CAN-NET NETWORK
AND ARE REFERRED TO UTM ZONE 17 (81° WEST LONGITUDE)
NAD83(CSRS)(1997.0)

COORDINATE VALUES ARE TO A RURAL ACCURACY IN
ACCORDANCE WITH SECTION 14(2) OF O.REG 216/10.

POINT ID	NORTHING	EASTING
A	4946319.39	505576.45
B	4946353.18	505534.46

CAUTION: COORDINATES CANNOT, IN THEMSELVES BE USED TO
RE-ESTABLISH CORNERS OR BOUNDARIES SHOWN ON THIS PLAN

INTEGRATION NOTES

BEARINGS ARE UNIVERSAL TRANSVERSE MERCATOR (UTM)
GRID, DERIVED FROM NETWORK GPS OBSERVATIONS
TRANSFERRED TO MONUMENTS 'A', 'B' AND 'C' SHOWN HEREON.
THE UTM GRID BEARING BETWEEN POINTS 'A' AND 'B' IS
N51°11'15"W, NAD83(CSRS)(1997.0), AND IS REFERRED TO THE
CENTRAL MERIDIAN OF UTM ZONE 17 (81° WEST LONGITUDE)

DISTANCES SHOWN ON THIS PLAN ARE GROUND AND
CAN BE CONVERTED TO GRID BY MULTIPLYING BY THE
COMBINED SCALE FACTOR OF 0.99956

BEARING COMPARISONS TO REGISTERED INSTRUMENTS AND
PLANS SHOWN ON THIS PLAN ARE ASTRONOMIC BEARINGS.
A CLOCKWISE ROTATION OF 359°58'55" CAN BE APPLIED TO
THESE ASTRONOMIC BEARING COMPARISONS TO CONVERT TO
UTM GRID BEARINGS

SURVEYOR'S CERTIFICATE
I CERTIFY THAT:

- THIS SURVEY AND PLAN ARE CORRECT AND IN ACCORDANCE WITH
THE SURVEYS ACT, THE SURVEYORS ACT AND THE LAND TITLES ACT
AND THE REGULATIONS MADE UNDER THEM.
- THE SURVEY WAS COMPLETED ON THE 1st DAY OF MARCH 2021.

MARCH 3rd 2021

Neil C. Milne
NEIL C. MILNE,
ONTARIO LAND SURVEYOR

**HEWETT AND MILNE LIMITED
ONTARIO LAND SURVEYORS**



302, 8th STREET EAST,
OWEN SOUND, ONTARIO
P. O. BOX 112, N4K 5P1
TEL. 519-376-5528
FAX 519-376-5534
EMAIL : info@hewettmilne.ca

DRAWN BY	FILE #	FILE LOCATION
TS	19-72Block65Rplan	C-13