



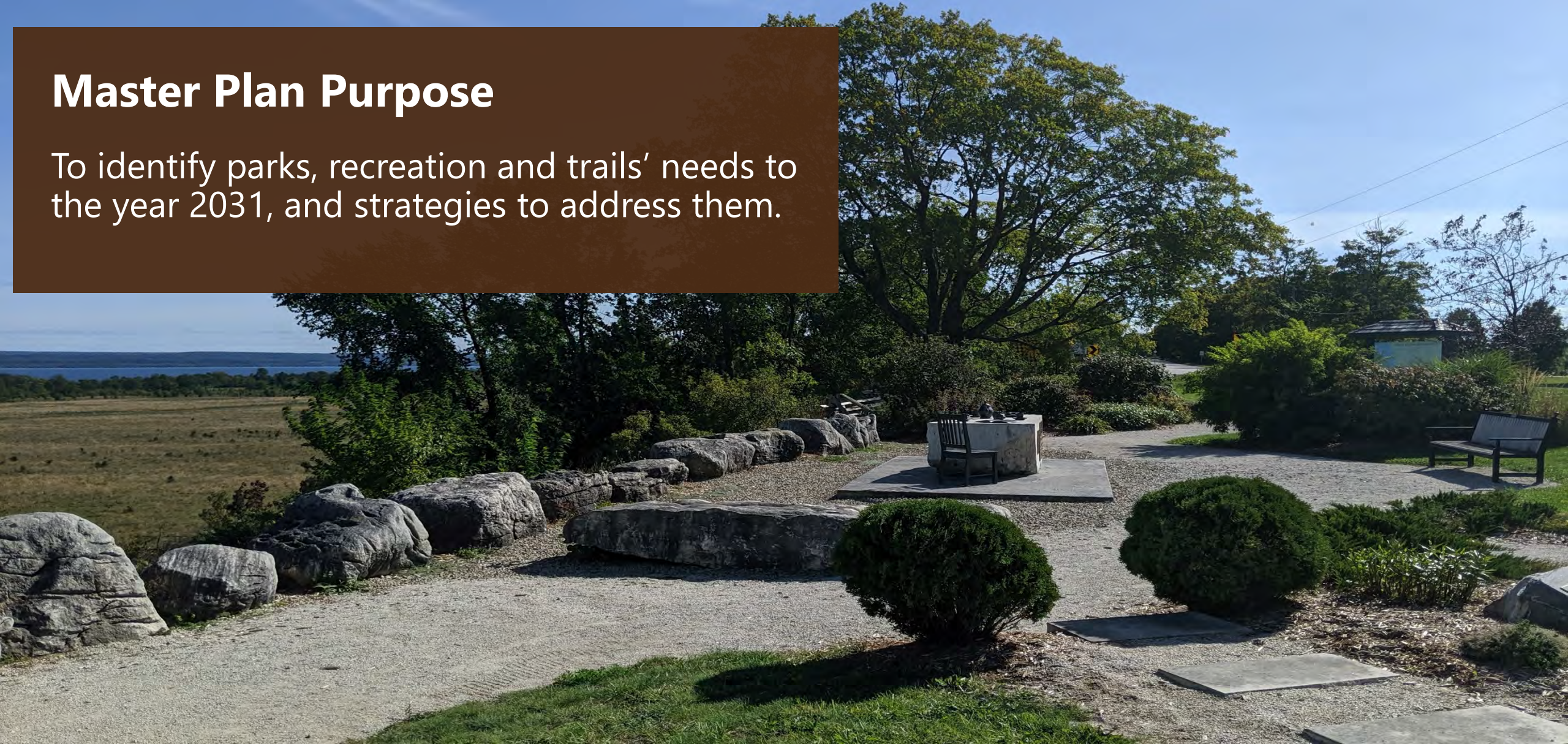
# Council Presentation

Recreation and Trails Master Plan | July 8, 2020



# Master Plan Purpose

To identify parks, recreation and trails' needs to the year 2031, and strategies to address them.





# Phase 1: Research & Consultation

**September  
2019**

Project Initiated  
Park, Facility & Trail Tours

**October**

RTMP Launch Event – Oct. 15  
Community Survey – 280 responses  
Stakeholder & Staff Sessions – Oct. 22

**November /  
December**

Background Research  
Research & Consultation Summary Report



## Phase 2: Action Plans

<b>January 2020</b>	Needs Assessments Implementation Strategies
<b>February</b>	Draft RTMP Council Presentation #1

## Phase 3: Testing & Finalizing

<b>March</b>	Open House #2 – March 12
<b>April</b>	Final Master Plan
<b>July</b>	Council Presentation #2



# Community Centre Rejuvenation Projects

Community centres in Derby and Kemble have documented deficiencies relating to their age, lifecycle, amenities and barrier-free accessibility (*\$520,000 in capital required for Kemble Arena & CC by 2028*)

Both are important facilities under the Township's recreation services model, and demographics of surrounding areas are changing

**Architectural, engineering and landscape architectural assessments should** be undertaken along with community consultations to develop conceptual plans and define costs for redevelopment

Spaces to be explored at both sites should include a hall and program rooms, active living / group fitness areas, playgrounds, gardens, outdoor courts, etc.







## Recreation System

Overlay **pickleball** lines on the Balmy Beach Park tennis courts and upon dry-floors at Derby and Kemble Community Centres

Install **outdoor fitness equipment** at Shouldice Park, possibly in partnership with a local fitness or service provider(s) to increase the park's appeal for all age groups

Clarify the status of a historical agreement in place with the **Township Chatsworth** regarding the Keady Arena, and discuss future plans for that facility



# Trails System

Three classifications of trail are proposed:  
Primary Multi-Use Trail, Secondary Multi-Use Trail and Recreational Trail

Proposed trail network aligns with County Master Plans, links to the Multi-Use Trail and Bruce Trail, and connects major destinations

Trail planning should be coordinated with Grey and Bruce Counties, Conservation Authority, Bruce Trail Conservancy, and others

Develop strategies with law enforcement and trail clubs to discourage non-permitted activities on trails





# Parks System

Acquire **3 hectares** (7.5 acres) of parkland by 2031

Extend **entrance signage** into all Township parks

Redevelop **Clavering Ball Diamond** as a focal point for community gatherings and passive recreational enjoyment with seating, shaded areas, pathways, public art, etc.





# Other Recommendations

Continue to **be a provider of space** through which others (volunteers, sport providers, community groups, etc. ) can deliver programs and services

Create a **Recreation Services Facilitator** position focused on community development, finding new program/rental opportunities and partnerships, and coordinating service providers





# Testing the Master Plan

- Support for the Master Plan's directions expressed by the vast majority Public Open House attendees including the:
  - trail classification system;
  - community centre rejuvenation projects;
  - willingness to work with the Township and strengthen relationships.
- Additional references to the Niagara Escarpment stakeholders (NEC, Biosphere Conservancy) were integrated into the Master Plan







Thank You!