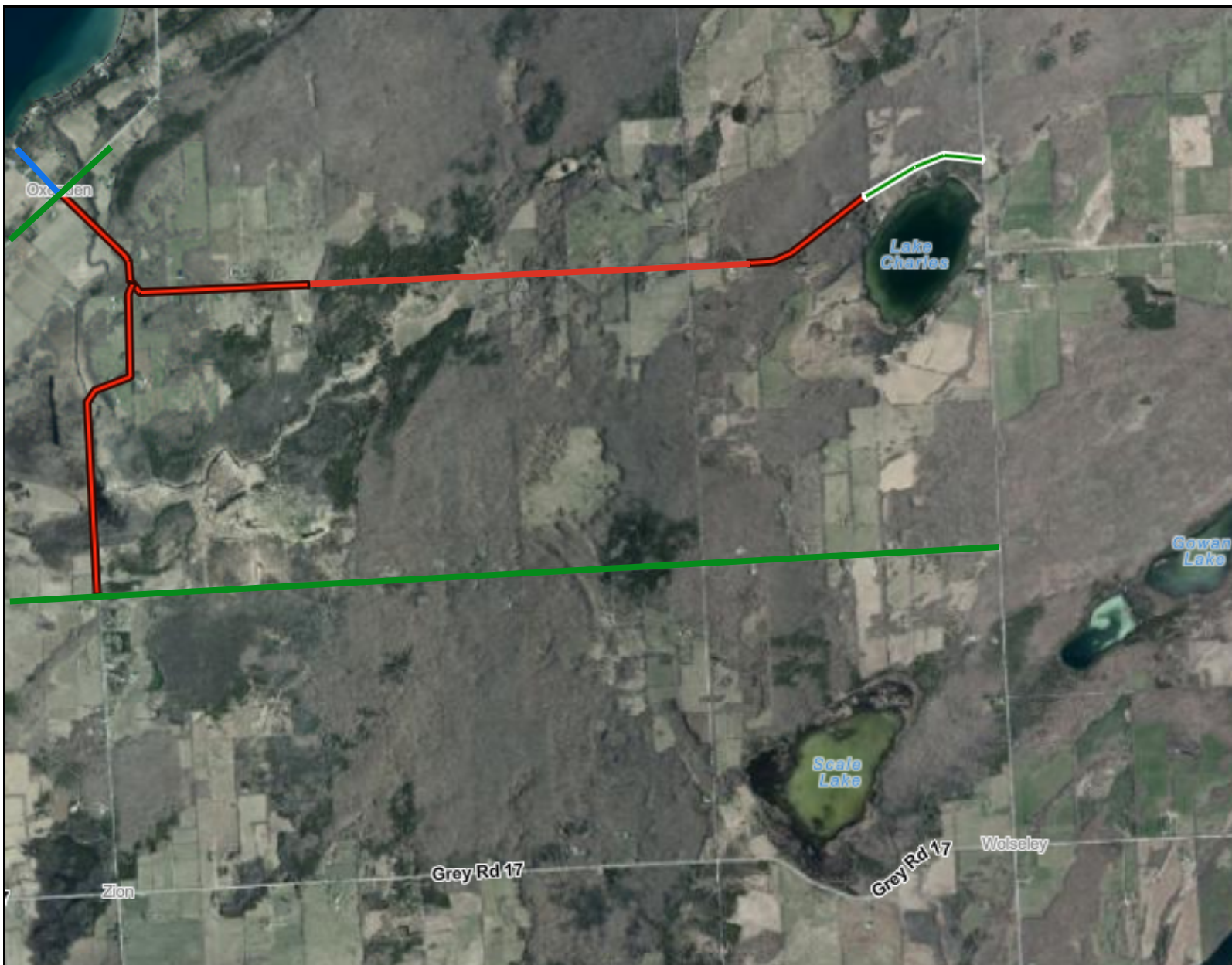





Grey County GIS | Proposed Speed Limit Reduction



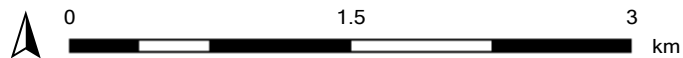
Legend

-  Proposed 60 km/h
-  Existing 60 km/h
-  Existing 50 km/h

Notes

Red Line Indicates speed limit reduction 60 km/h from 80 km/h. Green line is existing speed limit of 60 km/h

Print Date: 03/13/2025 15:56:45



This map is a user generated static output from an Internet mapping site and is for reference only. Data layers that appear on this map may or may not be accurate, current, or otherwise reliable. Contains information licensed under the Open Government Licence – Grey County
© County of Grey | © King's Printer for Ontario | THIS MAP IS NOT TO BE USED FOR NAVIGATION