

0 1.25 2.5 km



Site Location



Skinner's Bluff Management Area

Francis Lake

Mountain Lake

Lake Charles

Colpoy's Bay

Oxenden

Wiarton

Zion

Woiseley

Clavering

Lindenwood

Hogg

Kemble

East Linton

Copperkettle

County Road 470

Heaworth

**PLAN OF SURVEY OF
PART OF LOTS 19 & 20
CONCESSION 18
(GEOGRAPHIC TOWNSHIP OF KEPPEL)
TOWNSHIP OF GEORGIAN BLUFFS
COUNTY OF GREY**

WILSON-FORD

SCALE 1:1500
METRIC CONVERSION
DISTANCES AND COORDINATES SHOWN ON THIS PLAN ARE IN METRES
AND CAN BE CONVERTED TO FEET BY DIVING BY 0.3048

REQUIRE THIS PLAN TO BE
RECEIVED AND DEPOSITED
DATE: _____
2020

PLAN 16R
DATE: _____

REGISTRAR FOR THE LAND
REGISTRY FOR THE LAND TITLES
DIVISION OF GREY (NO.10)

GREG FORD, P. Eng (CIVIL)
ONTARIO LAND SURVEYOR

SCHEMATIC

PART	LOT	CON	PN
1	PART OF 19		
2	PART OF 19		
3	PART OF 19		
4	PART OF 19		
5	PART OF 19		
6	PART OF 19		
7	PART OF 19		
8	PART OF 19		
9	PART OF 19		
10	PART OF 19		
11	PART OF 19		
12	PART OF 19		
13	PART OF 19		
14	PART OF 19		
15	PART OF 19		
16	PART OF 20		
17	PART OF 20		
18	PART OF 20		
19	PART OF 20		
20	PART OF 20		
21	PART OF 20		
22	PART OF 20		
23	PART OF 20		
24	PART OF 20		
25	PART OF 20		
26	PART OF 20		
27	PART OF 20		
28	PART OF 20		
29	PART OF 20		
30	PART OF 20		
31	PART OF 20		
32	PART OF 20		
33	PART OF 20		
34	PART OF 20		
35	PART OF 20		
36	PART OF 20		
37	PART OF 20		
38	PART OF 20		
39	PART OF 20		
40	PART OF 20		
41	PART OF 20		
42	PART OF 20		
43	PART OF 20		
44	PART OF 20		
45	PART OF 20		
46	PART OF 20		
47	PART OF 20		
48	PART OF 20		
49	PART OF 20		
50	PART OF 20		
51	PART OF 20		
52	PART OF 20		
53	PART OF 20		
54	PART OF 20		
55	PART OF 20		
56	PART OF 20		
57	PART OF 20		
58	PART OF 20		
59	PART OF 20		
60	PART OF 20		
61	PART OF 20		
62	PART OF 20		
63	PART OF 20		
64	PART OF 20		
65	PART OF 20		
66	PART OF 20		
67	PART OF 20		
68	PART OF 20		
69	PART OF 20		
70	PART OF 20		
71	PART OF 20		
72	PART OF 20		
73	PART OF 20		
74	PART OF 20		
75	PART OF 20		
76	PART OF 20		
77	PART OF 20		
78	PART OF 20		
79	PART OF 20		
80	PART OF 20		
81	PART OF 20		
82	PART OF 20		
83	PART OF 20		
84	PART OF 20		
85	PART OF 20		
86	PART OF 20		
87	PART OF 20		
88	PART OF 20		
89	PART OF 20		
90	PART OF 20		
91	PART OF 20		
92	PART OF 20		
93	PART OF 20		
94	PART OF 20		
95	PART OF 20		
96	PART OF 20		
97	PART OF 20		
98	PART OF 20		
99	PART OF 20		
100	PART OF 20		

LEGEND

- FOUND MONUMENTS
- SET MONUMENTS
- STAKES
- STAKES WITH BURN BAR
- OBSERVED REFERENCE POINT
- UNOBSERVED REFERENCE POINT
- SHOWN ARE LAND TITLES UNLESS NOTED OTHERWISE
- OVERHEAD UTILITY LINE
- UP SH —
- PLAN 166-1482
- PLAN 166-2729
- PLAN 166-2729
- PLAN 166-2729
- PLAN OF KEPPEL TOWNSHIP (MAP 72)

ALL BEARINGS AND DISTANCES SHOWN HEREON ARE MEASURED UNLESS INDICATED OTHERWISE

BEARINGS NOTE

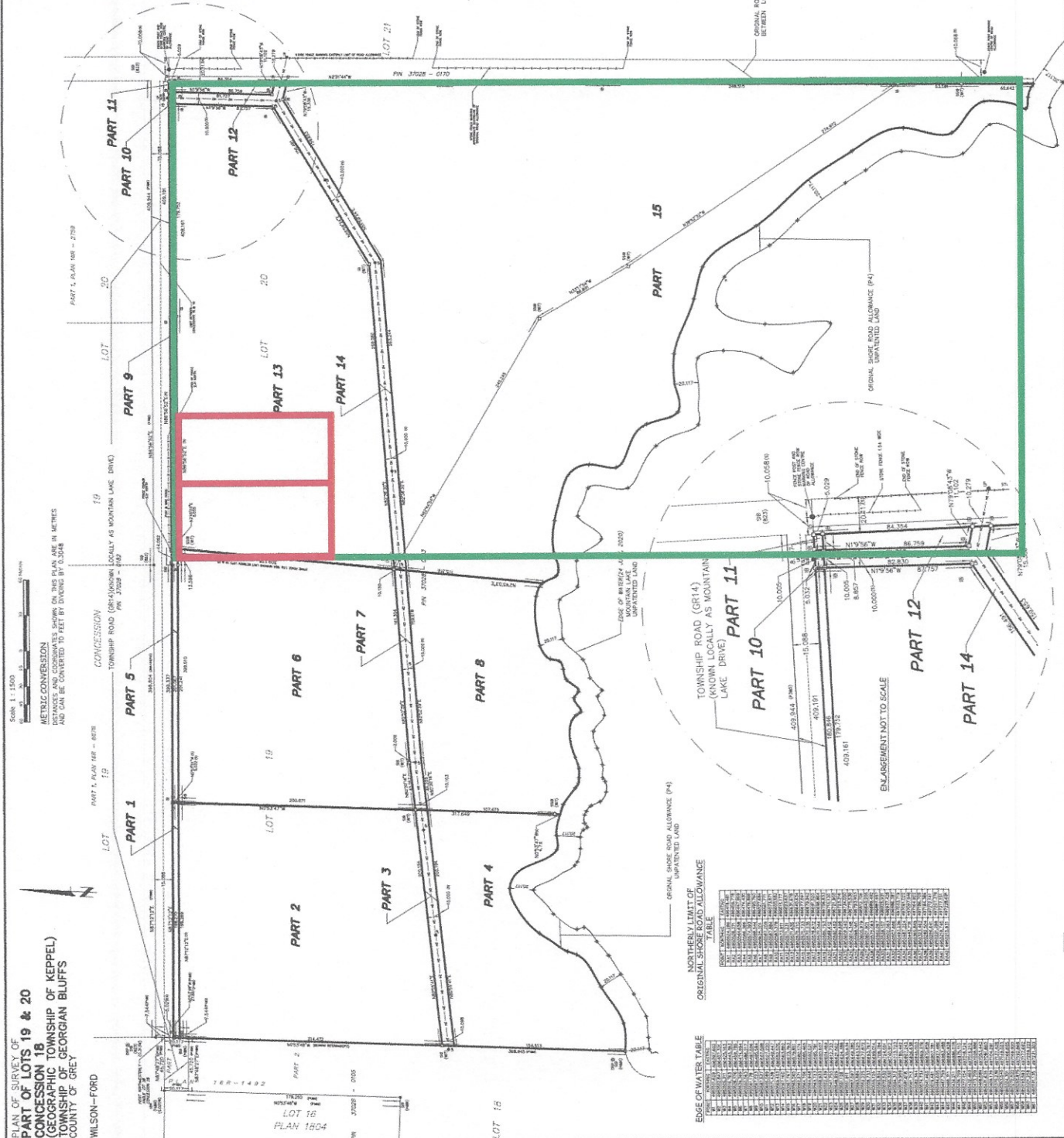
ALL BEARINGS AND DISTANCES SHOWN HEREON ARE MEASURED UNLESS INDICATED OTHERWISE

SURVEYOR'S CERTIFICATE

I CERTIFY THAT THIS PLAN AND PLAN ARE CORRECT AND IN ACCORDANCE WITH THE SURVEY ACT, THE SURVEYORS ACT AND THE LAND TITLES ACT

DATE: 19 AUGUST, 2020

GREG FORD, P. Eng (CIVIL)
ONTARIO LAND SURVEYOR



PLAN OF SURVEY OF
PART OF LOTS 19 & 20
CONCESSION 18
(GEOGRAPHIC TOWNSHIP OF KEPPEL)
TOWNSHIP OF GEORGIAN BLUFFS
COUNTY OF GREY

WILSON-FORD

REGISTRAR FOR THE LAND
REGISTRY FOR THE LAND TITLES
DIVISION OF GREY (NO.10)

GREG FORD, P. Eng (CIVIL)
ONTARIO LAND SURVEYOR

REQUIRE THIS PLAN TO BE
RECEIVED AND DEPOSITED
DATE: _____
2020

PLAN 16R
DATE: _____

REGISTRAR FOR THE LAND
REGISTRY FOR THE LAND TITLES
DIVISION OF GREY (NO.10)

GREG FORD, P. Eng (CIVIL)
ONTARIO LAND SURVEYOR

REQUIRE THIS PLAN TO BE
RECEIVED AND DEPOSITED
DATE: _____
2020

PLAN 16R
DATE: _____

REGISTRAR FOR THE LAND
REGISTRY FOR THE LAND TITLES
DIVISION OF GREY (NO.10)

GREG FORD, P. Eng (CIVIL)
ONTARIO LAND SURVEYOR

REQUIRE THIS PLAN TO BE
RECEIVED AND DEPOSITED
DATE: _____
2020

PLAN 16R
DATE: _____

REGISTRAR FOR THE LAND
REGISTRY FOR THE LAND TITLES
DIVISION OF GREY (NO.10)

GREG FORD, P. Eng (CIVIL)
ONTARIO LAND SURVEYOR

REQUIRE THIS PLAN TO BE
RECEIVED AND DEPOSITED
DATE: _____
2020

PLAN 16R
DATE: _____

REGISTRAR FOR THE LAND
REGISTRY FOR THE LAND TITLES
DIVISION OF GREY (NO.10)

GREG FORD, P. Eng (CIVIL)
ONTARIO LAND SURVEYOR

REQUIRE THIS PLAN TO BE
RECEIVED AND DEPOSITED
DATE: _____
2020

PLAN 16R
DATE: _____

REGISTRAR FOR THE LAND
REGISTRY FOR THE LAND TITLES
DIVISION OF GREY (NO.10)

GREG FORD, P. Eng (CIVIL)
ONTARIO LAND SURVEYOR

REQUIRE THIS PLAN TO BE
RECEIVED AND DEPOSITED
DATE: _____
2020

PLAN 16R
DATE: _____

REGISTRAR FOR THE LAND
REGISTRY FOR THE LAND TITLES
DIVISION OF GREY (NO.10)

GREG FORD, P. Eng (CIVIL)
ONTARIO LAND SURVEYOR

REQUIRE THIS PLAN TO BE
RECEIVED AND DEPOSITED
DATE: _____
2020

PLAN 16R
DATE: _____

REGISTRAR FOR THE LAND
REGISTRY FOR THE LAND TITLES
DIVISION OF GREY (NO.10)

GREG FORD, P. Eng (CIVIL)
ONTARIO LAND SURVEYOR

REQUIRE THIS PLAN TO BE
RECEIVED AND DEPOSITED
DATE: _____
2020

PLAN 16R
DATE: _____

REGISTRAR FOR THE LAND
REGISTRY FOR THE LAND TITLES
DIVISION OF GREY (NO.10)

GREG FORD, P. Eng (CIVIL)
ONTARIO LAND SURVEYOR

REQUIRE THIS PLAN TO BE
RECEIVED AND DEPOSITED
DATE: _____
2020

PLAN 16R
DATE: _____

REGISTRAR FOR THE LAND
REGISTRY FOR THE LAND TITLES
DIVISION OF GREY (NO.10)

GREG FORD, P. Eng (CIVIL)
ONTARIO LAND SURVEYOR

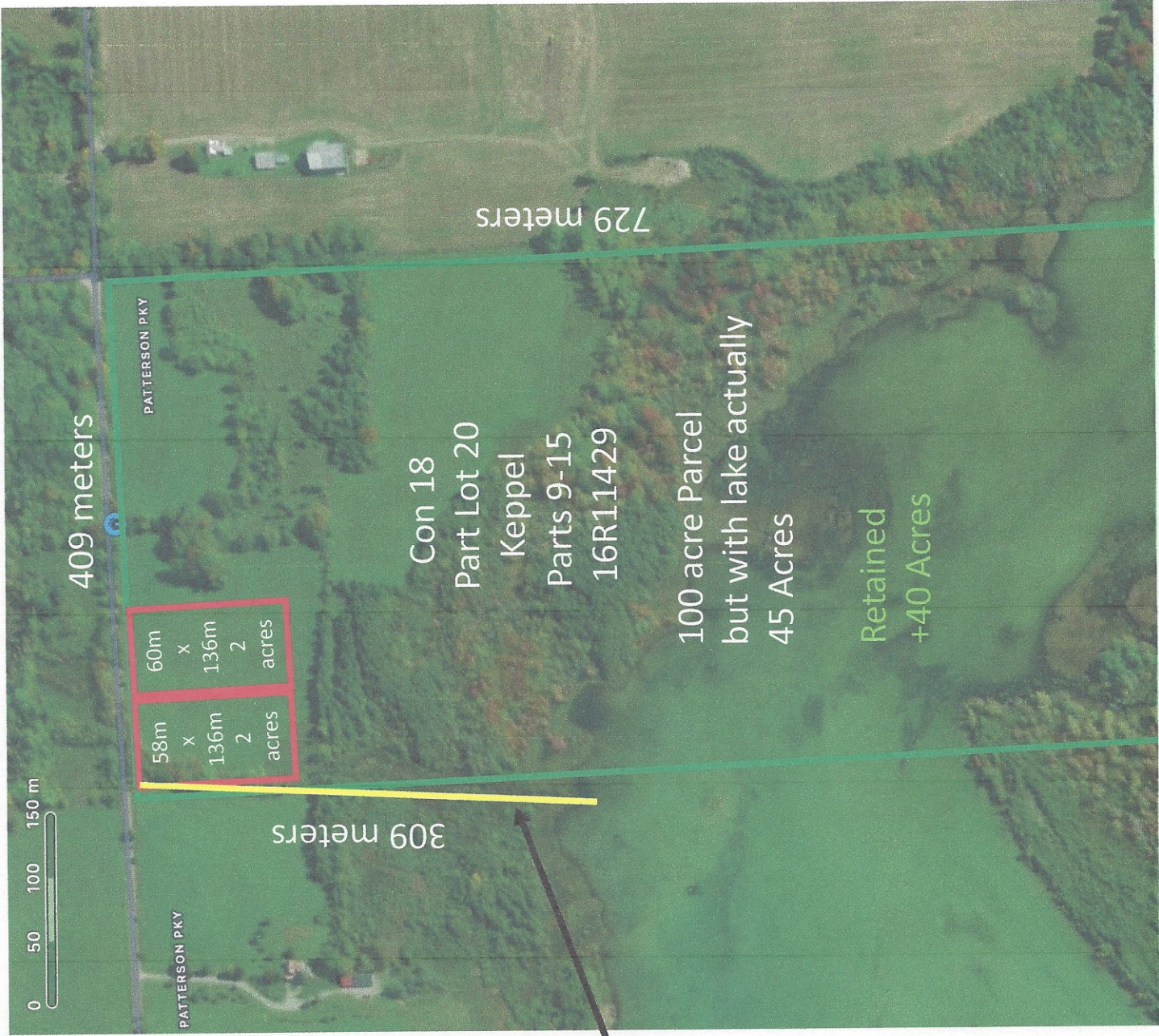
REQUIRE THIS PLAN TO BE
RECEIVED AND DEPOSITED
DATE: _____
2020

PLAN 16R
DATE: _____

REGISTRAR FOR THE LAND
REGISTRY FOR THE LAND TITLES
DIVISION OF GREY (NO.10)

GREG FORD, P. Eng (CIVIL)
ONTARIO LAND SURVEYOR

WILSON - FORD
Surveying & Engineering
130 KING ST. E. Box 284
MOUNTAIN VIEW, ONTARIO M0W 2T0
PROJECT NO.: 20-284 VALUE ENGINEER



Actual
Property Line

409 meters

729 meters

Con 18
Part Lot 20
Keppel
Parts 9-15
16R11429

100 acre Parcel
but with lake actually
45 Acres

Retained
+40 Acres

58m x 136m 2 acres
60m x 136m 2 acres

309 meters

0 50 100 150 m

PATTERSON PKY

PATTERSON PKY

0 12 24 36 m





2018 Schedule A

Land Use



Legend

Future Secondary Plan Area

Land use

- Primary Settlement Area
- Secondary Settlement Area
- Agricultural
- Escarpment Recreation Area
- Hazard Lands
- Inland Lakes & Shoreline
- Niagara Escarpment Plan Area
- Rural
- Space Extensive Industrial and Commercial
- Sunset Strip Area
- Industrial Business Park
- Special Agriculture
- Provincially Significant Wetlands
- Recreation Resort Area

Parcels

- Large Scale Roads
- Provincial Highway
- County Road
- Township Road
- Seasonal Road

Notes

This map is a user generated static output from an internet mapping site and is for reference only.
 Data layers that appear on this map may or may not be accurate, current, or otherwise reliable.

0.28 Kilometers

0.14

0

WGS, 1984, Web_Mercator_Auxiliary_Sphere
 © County of Grey



Printed: December 21, 2018

THIS MAP IS NOT TO BE USED FOR NAVIGATION



2018 App B Constraints

Natural Heritage



Legend

- ANSI
- ANSI, Earth Life Science
- ANSI, Earth Science
- ANSI, Life Science
- Streams
- Lakes and Rivers
- Other Wetlands
- Significant Valleylands
- Significant Woodlands
- Parcels
- Large Scale Roads
- Provincial Highway
- County Road
- Township Road
- Seasonal Road

Notes

This map is a user generated static output from an Internet mapping site and is for reference only.
 Data layers that appear on this map may or may not be accurate, current, or otherwise reliable.

Printed: December 21, 2018 THIS MAP IS NOT TO BE USED FOR NAVIGATION



WGS, 1984, Web_Mercator_Auxiliary_Sphere
 © County of Grey



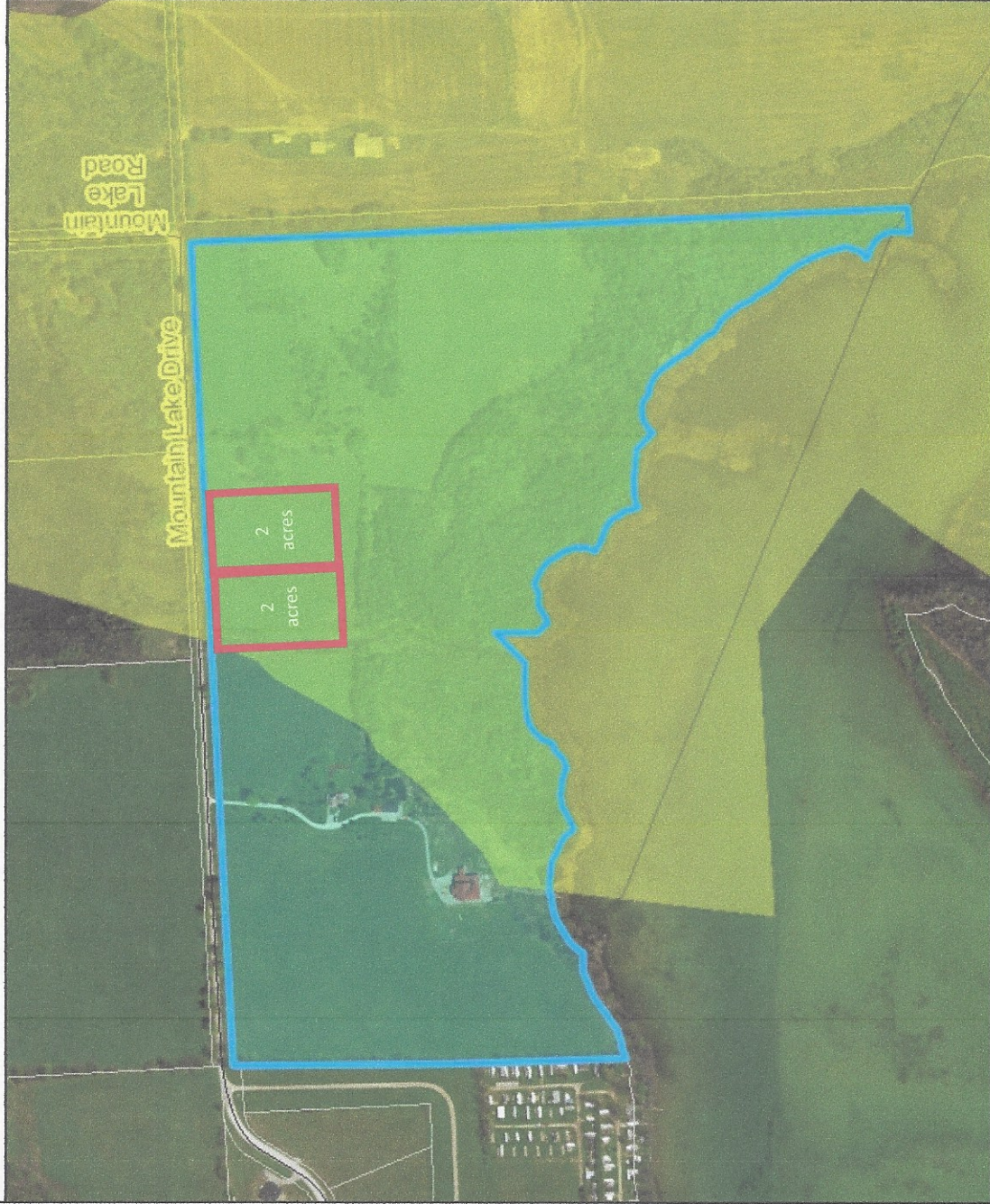
2018 App A Karst

Karst

Legend

Hazardous Forest Types for Wildfire

- Extreme
- High
- Karst Area
- Parcels
- Large Scale Roads
 - Provincial Highway
 - County Road
 - Township Road
 - Seasonal Road



Notes

This map is a user generated static output from an internet mapping site and is for reference only. Data layers that appear on this map may or may not be accurate, current, or otherwise reliable.

Printed: December 21, 2018 THIS MAP IS NOT TO BE USED FOR NAVIGATION

0.28 Kilometers
0.14
0

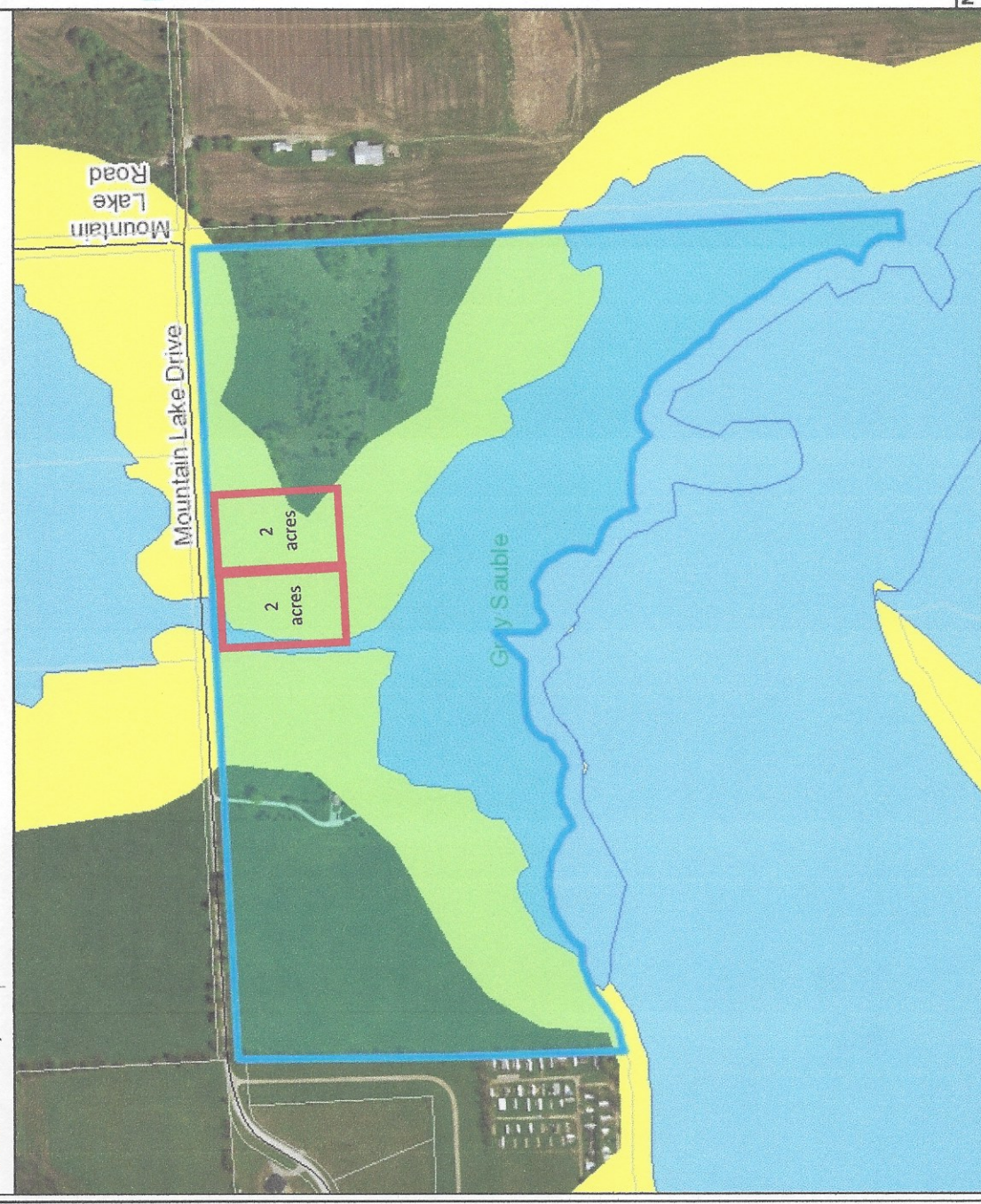
WGS_1984_Web_Mercator_Auxiliary_Sphere

© County of Grey



CA

GSCA



Legend

- Parcels
- Large Scale Roads**
 - Provincial Highway
 - County Road
 - Township Road
 - Seasonal Road
- CA Boundaries**
 - Wet Areas - GSCA
 - Water Features
 - Watercourses
- Regulations - GSCA**
 -

Notes

This map is a user generated static output from an internet mapping site and is for reference only.
 Data layers that appear on this map may or may not be accurate, current, or otherwise reliable.

0.28 Kilometers

0.14

0

WGS_1984_Web_Mercator_Auxiliary_Sphere
 © County of Grey

Printed: December 21, 2018 THIS MAP IS NOT TO BE USED FOR NAVIGATION